

Student and Hotel

Electric Heating



SMART CONTROLLED HEATING

UTOPI



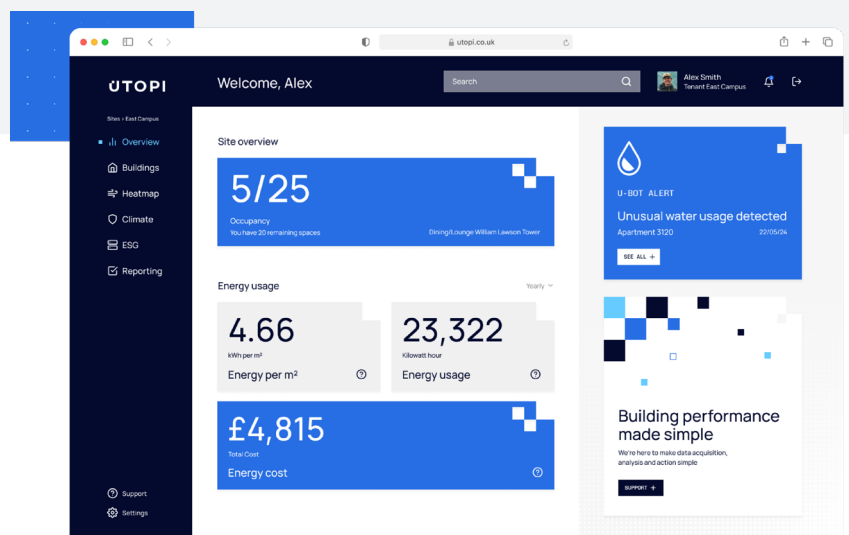
Automated Control, Automated Results.

Up to **20% gross savings** on heating

Caldo electric panel heaters are compatible with UTOPI's data solutions and ESG technology platform.

The Utopi Platform allows the building's residents and management to control the heating and other conditions in each apartment.

Utopi acquire granular data from each apartment, to optimise operational efficiency, reduce energy consumption, and improving resident well-being.

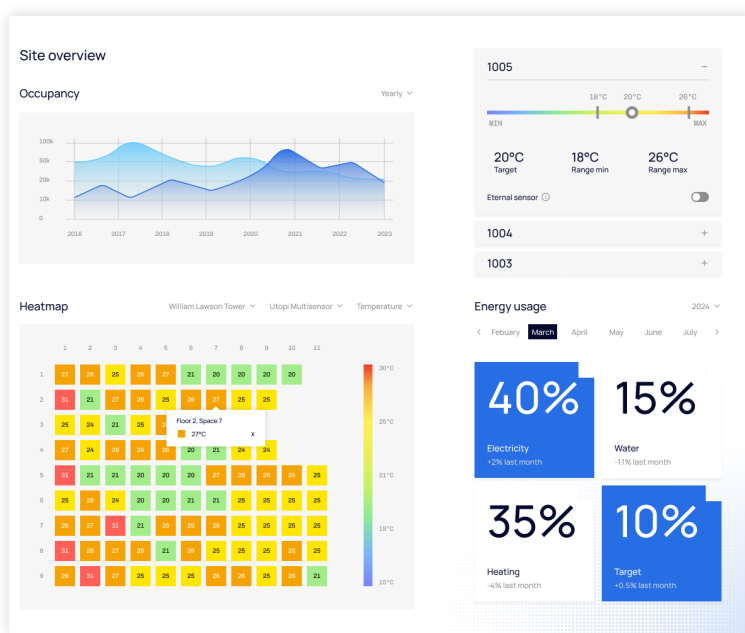


Heating For the **Future**

ESG Monitoring

The UTOPI platform allows operators to monitor how residents are using their heating system, providing valuable data for environmental, social, and governance (ESG) reporting.

The building operator is given a precise overview on the conditions within the room. Which has benefits such as:

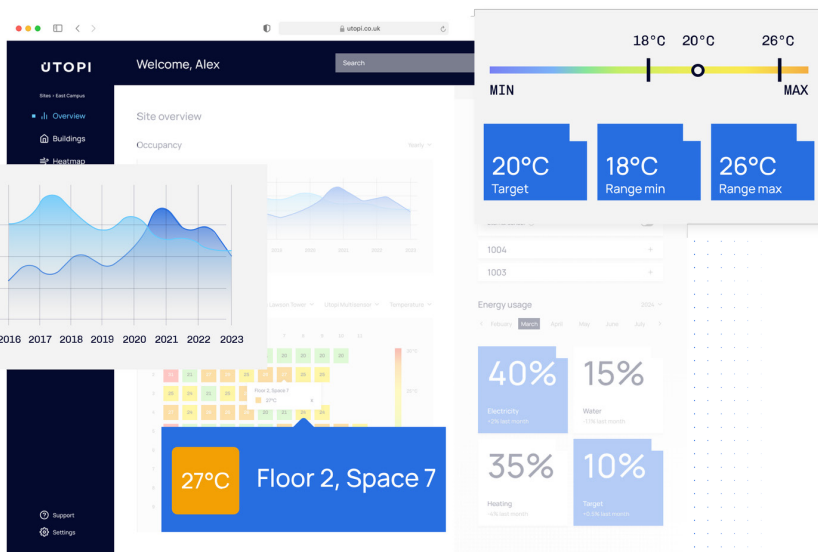


Efficiency

By viewing data such as energy usage and room temperature the operator can detect misuse and energy waste within each room.

Safety

By monitoring the room's environment, anomalies such as excessive high/low temperatures can be flagged, so action can be taken



Control

Operators can create settings for individual rooms or entire buildings, giving them unparalleled control over their facilities.

Such as adjusting heating levels, setting user boundaries, or reducing temperatures when spaces are empty.

Room Sensor

The Utopi Multi sensor is specifically developed for the multi-tenant market.

Designed to be low cost, aesthetically pleasing, and battery-operated. The deployment of the sensor is easy yet scalable.

It can be retro-fitted into existing developments, or specifying integrated into new builds.



The comprehensive capabilities provide data on:

Temperature, Humidity, Noise, Light, eCO2, TVOC, Motion (PIR), Power Supply / Battery Voltage, Magnetic Contact(hall effect sensor)



Resident Control

From the control screen, the resident can activate Boost for either 1 or 2 hours. Boost increases the heater's thermostat temporarily. After the boost period concludes, the heater reverts to the previous mode.

By providing a comfortable living environment and allowing residents to control their own heating settings. Not only are residents kept happy the accommodation is more attractive to prospective residents.

Other Devices

The UTOPI network also includes other devices such as

1. Utopi Multi sensor
2. Electricity Meters
3. People Counting Devices
4. Water Meters
5. Utopi Platform
6. Advisory Services
7. Resident App API
8. Utopi Smart TRV
9. Utopi Resident App

Caldo s2

Overview

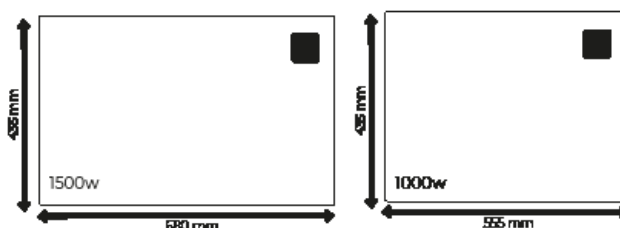
Economical and budget friendly electric panel heater with smart WiFi controls. Fully ERP LOT20 compliant.

- Programmable thermostat and timer
- WiFi Controlled
- Wall Mounted
- Splashproof



Specs

Room Sensors	Electric Thermostat - range 7-30 °C
Manual Control	Defaults to 15°C Eco mode. 1 or 2 boost hours in comfort mode. Only comfort mode temperature can be adjusted. (Default temperatures can be changed via Utopi Platform)
Display	Digital touch display
Eco Features	Operator Remote Control
Installation	1 H wall bracket
Protection	IP24 & Overheat protection
Element	Aluminium X fin
Flex Length	1.3m
Clearances	50mm below, 150mm above, 50 in front.
Material	Mild Steel
WIFI	WiFi 2,4 GHz, WPA2, 802.11 b/g/n
Supported Protocols	MQTTS
Secure Network	This device includes a secure, encrypted data link for communication with and control of the heaters.



Detail

Guarantee	2 Years (Bodywork and Electronics)
Manufacturer	SolAire

Codes	Size(mm)	Weight(Kg)	Pallet Quantity
CAL10	1000w 435 x 555 x 100	4.7	40
CAL15	1500w 435 x 680 x 100	5	40

SolAire Heating Products

Big Shed

New Row

Eppleby

DL11 7AW



(+ 44) 01325 717 899
info@solairehp.co.uk