

Sol*Aire

WiFi IQ

SolAire WiFi IQ Electric Heating

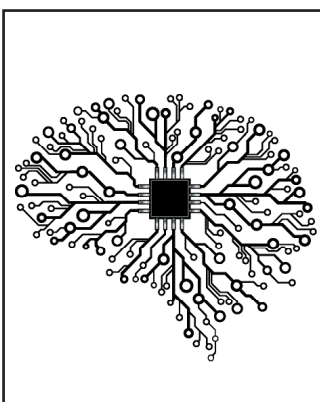
Caldo
Vitra



MODERN DESIGN

Caldo Metal Panel

Vitra Glass Panel



Full of smart features including Amazon Alexa and Google Home Integration.



Fully programmable, schedule your heating around your lifestyle. Setting different temperatures throughout the day.



Inbuilt WiFi Control lets control your heating with your smart device from anywhere in the world.



Light weight and easy to install with well throughout bracket system.

WiFi IQ

The WiFi IQ range makes smart, fully autonomous home heating affordable. Designed to bring maximum control, ease of use and efficient heating. IQ technology is installed in our Vitra and Caldo electric panel heaters.

Heating For the Future

Whether you're listening to a podcast on the way to work, or watching Blue Planet in the evening, its likely global warming has been mentioned.

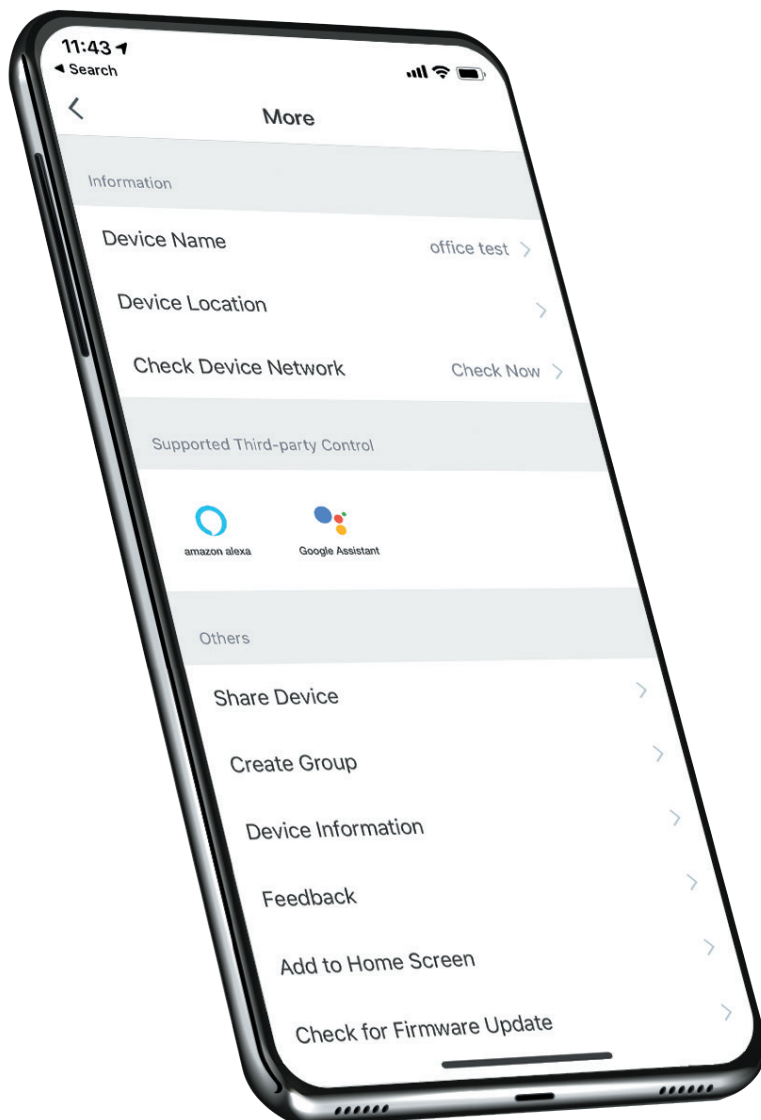
The impact of fossil fuels on the environment is hard to ignore.

To combat climate change, the government are incentivising the switch from oil and coal power to electric.

The growing network supplying "greener" electricity, such as solar and wind farms, has made electricity the most environmentally friendly option.

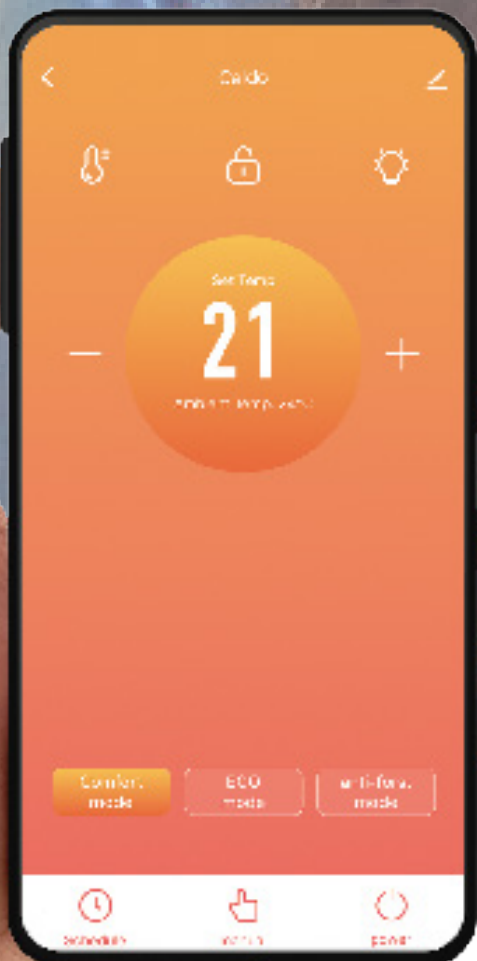
From 2025, gas heating systems will be banned in new build homes.

With changes to SAP 10.1, electric is now graded as the least environmentally harmful heating method.



WiFi

Smart control
from anywhere





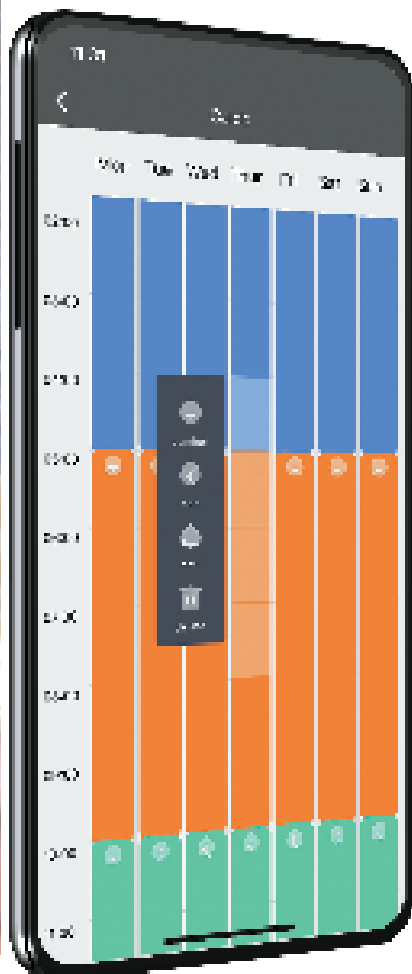
The power of the Vioce

You no longer need to leave your seat or open the App! With Amazon Alexa and Google Home integration, your heating responds to voice commands.

Say phrases such as "turn heating on" and "set heater to 20 degrees".



Programmable Timer



With the SolAire IQ APP its easy to set a heating programme.

Assing 3 heating Comfort, Eco and Anti-frost each day. Set these modes whenever you like and have your homes heating tailored around your lifestyle!

Comfort and Eco mode can be set to any temperature between 8-30 degrees. Once set, the heater's thermostat will maintain whatever temperature you choose.

With the timer you can set as many on and off times as you need.



Caldo Metal Panel Heater



Vitra Glass Panel Heater

Intro

The Caldo and Vitra are stylish and economical electric heaters.

With the new, state of the art App, controlling your heaters is made easy.

In built WiFi control, means you'll never come home to a cold house again!

Simply download the App, install the heaters and you're ready to go



Its easy to programme your heating system. With complete time and temperature control.

In the App, each heater can be controlled independently. Letting you select which rooms are warm throughout the day.

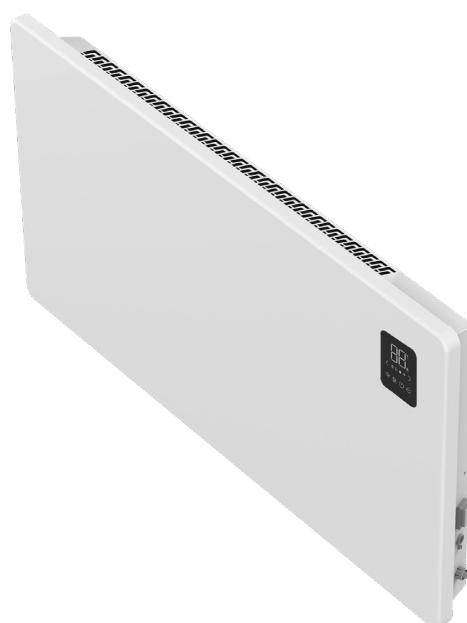
This prevents you from needlessly wasting money to heat unused rooms!

The App's intuitive scheduling method makes setting the heater's timer as easy as possible

Quality tested and backed by a comprehensive 2 year guarantee for your long term peace of mind.

Supplied with wall mounting kit and 3 pin plug. Installing this heater is a pain free task.

Portable leg brackets are available separately



Basic Info

The CALDO is a stylish range of electric panel heaters. Suitable for use in both domestic and commercial applications. The CALDO is available in 5 power outputs: 500, 1000, 1500, 2000 and 2500 (Watts).

The CALDO has in built Wi-Fi connectivity. The heater will connect directly to the user's WiFi network. Enabling simple and intuitive control over the heater through a smart phone App.

No additional gate ways or hubs are required. Electric panel heaters provide instant heat and will warm the room very quickly compared to other electric heaters, such as oil filled Radiators.

As a rough guide, we estimate, in the average UK home to spec at least 80w per m2 to comfortably heat the area. Please note in spaces with amount of high heat loss, such as conservatories, more power will be required.

Electric panel heaters must not be covered or used to dry items, such as clothing. CALDO electric heater's are ERP/Lot20 compliant. As per Lot20 regulations, every electric heater, used as a primary heat source, must meet this requirement.

For Commercial

The CALDO can be controlled completely through the SolAire WiFi App. Both Eco (set back) temperature and Comfort (boost) temperature are adjusted by using the APP.

Each heater can be individually controlled and assigned to a room. This makes controlling areas with multiple heaters and rooms, such as student accommodations simple.

Students especially will talk about cold rooms and poor experiences usually in forums. The CALDO's high level of control means, if the occupant complains about the temperature in their room, the heating can be adjusted to their individual needs.

Read more detail on this feature in the "Heating for controlled living environments" brochure.

Caldo



- Ip24 Splashproof
- 1.5m Flex Length
- Flex Position; Bottom Right
- Height 435mm
- Depth 100mm
- Thermostat range 7 -30 degrees
- Silent Operation
- Portable feet optional

Feature	Y (Yes) N (No)
Electric Thermostat	Y
Timer	Y
24 / 7 Programming	Y
Open Window Detection	N
Adaptive start	N
Distance Control	Y
Display	Y
Over Heat Protection	Y
Frost Protection	Y
Wall Mount Brackets	Y

Brand	SolAire
Model	CALDO
Mount Type	Wall Mounted
Warranty	2 Years
Colours	White
Style	Convector Heater

VITRA



- Ip24 Splashproof
- 1.5m Flex Length
- Flex Position; Bottom Right
- Height 470mm
- Depth 100mm
- Thermostat range 7 - 30 degrees
- Silent Operation
- Portable feet optional

Feature	Y (Yes) N (No)
Electric Thermostat	Y
Timer	Y
24 / 7 Programming	Y
Open Window Detection	N
Adaptive start	N
Distance Control	Y
Display	Y
Over Heat Protection	Y
Frost Protection	Y
Wall Mount Brackets	Y

Brand	SolAire
Model	Vitra
Mount Type	Wall Mounted
Warranty	2 Years
Colours	White or Black
Style	Convector Heater



Energy Efficient Heating

Controlled Living

The CALDO is a truly universal heater. Suitable for domestic use but also controlled living areas, such as student accommodations or Hotels. Where the likelihood of the occupant leaving the heater on, is very high.

A lot of thought has gone into the design of the CALDO to help us achieve this goal. Whilst keeping the heater compliant with ErP2018/Lot20 regulations .

The student / occupant uses the CALDO directly from the front mounted control screen. The heater (defaults to the ECO Mode. Keeping a constant default room temperature of 15 degrees. (This temperature can be changed by the building's manager).

From the control screen, the occupant can activate Comfort mode (Boost) for either 1 or 2 hours. In the comfort mode they can set any temperature up to 30 degrees . After the selected boost period concludes, the CALDO reverts to Eco mode.

The Building's manager will have intrinsic control over the heaters via the SolAire WiFi IQ App. Here, every heater on the building's network can be remotely viewed and controlled. To make things easy, there are 3 layers to organise and arrange the building's heaters:

- The Floor - Under the App's Home Management tab, each floor can be added.
- The Room - Add each room into the appropriate floor.
- The Heater - Add the heater into the correct room and give it an recognisable name.

Please feel free to contact us if you'd like a video demo of how this can be arranged.

The App can adjust the eco temperature for each individual heater Between 7 and 29 degrees. This is ideal for the ground floors which are generally colder rooms. The App also enables the heater to be set to a 24/7 heating schedule, if you need to override the Student settings. Ideal for offices or recreational zones.

The CALDO cannot be overridden from the heater control panel. If the WiFi or power is slightly interrupted, the CALDO will remember the settings when it re-joins the network .

Please contact us if you'd like a video demo of how this can be arranged.

FAQ

Can the heater be set up without a WIFI network present?

Yes.
The CALDO can be operated manually. There is a control panel on the front of the heater where the thermostat can be adjusted.

Can I use the heater in my bathroom?

Yes.
As the CALDO is IP24 rated.

Do I need to pay for the APP ?

No.
The APP is free download and is available on the Google Play and App stores. Search SolAire WIFI IQ.

Technical Info

- Fully compliant with 2018 heating regulations.
- Rated IPx4 for use in bathroom zones 1 and above.
- Electronic thermostat and Timer.
- WiFi control through the SolAire IQ app.
- Manual control panel should the WiFi fail.
- Easy to install bracket system.
- Overheat safety cut out.
- Thermostat calibration.
- New X fin heating element, for near silent operation.
- 3 pin plug fitted

SolAire Heating Products

Big Shed

New Row

Eppleby

DL11 7AW



(+ 44) 01325 717 899
info@solairehp.co.uk